

PPM1H Antibody (Center)
Affinity Purified Rabbit Polyclonal Antibody (Pab)
Catalog # AP9093c

Specification

PPM1H Antibody (Center) - Product Information

Application	WB, FC, IHC-P,E
Primary Accession	O9ULR3
Reactivity	Human, Mouse
Host	Rabbit
Clonality	Polyclonal
Isotype	Rabbit IgG
Antigen Region	235-263

PPM1H Antibody (Center) - Additional Information

Gene ID 57460

Other Names

Protein phosphatase 1H, PPM1H, ARHCL1, KIAA1157, URCC2

Target/Specificity

This PPM1H antibody is generated from rabbits immunized with a KLH conjugated synthetic peptide between 235-263 amino acids from the Central region of human PPM1H.

Dilution

WB~~1:1000

FC~~1:10~50

IHC-P~~1:50~100

E~~Use at an assay dependent concentration.

Format

Purified polyclonal antibody supplied in PBS with 0.09% (W/V) sodium azide. This antibody is purified through a protein A column, followed by peptide affinity purification.

Storage

Maintain refrigerated at 2-8°C for up to 2 weeks. For long term storage store at -20°C in small aliquots to prevent freeze-thaw cycles.

Precautions

PPM1H Antibody (Center) is for research use only and not for use in diagnostic or therapeutic procedures.

PPM1H Antibody (Center) - Protein Information

Name PPM1H

Synonyms ARHCL1, KIAA1157, URCC2

Function Dephosphorylates CDKN1B at 'Thr-187', thus removing a signal for proteasomal degradation.

Cellular Location

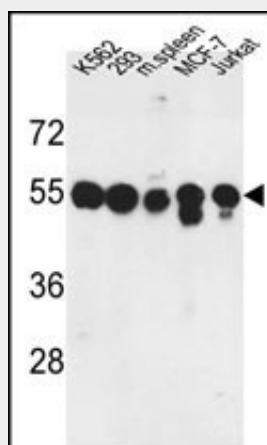
Nucleus. Cytoplasm

PPM1H Antibody (Center) - Protocols

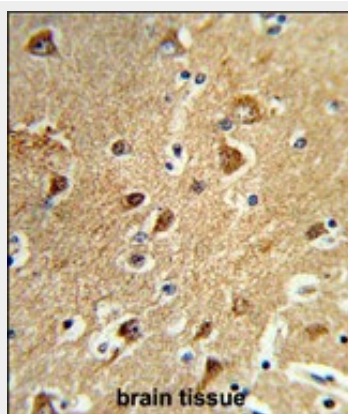
Provided below are standard protocols that you may find useful for product applications.

- [Western Blot](#)
- [Blocking Peptides](#)
- [Dot Blot](#)
- [Immunohistochemistry](#)
- [Immunofluorescence](#)
- [Immunoprecipitation](#)
- [Flow Cytometry](#)
- [Cell Culture](#)

PPM1H Antibody (Center) - Images

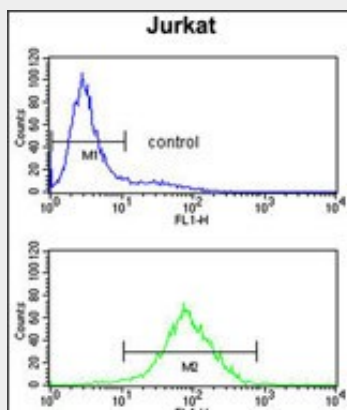


Western blot analysis of PPM1H Antibody (Center) (Cat. #AP9093c) in K562, 293, MCF-7, Jurkat cell line and mouse spleen tissue lysates (35ug/lane). PPM1H (arrow) was detected using the purified Pab.



Formalin-fixed and paraffin-embedded human brain tissue reacted with PPM1H Antibody (Center),

which was peroxidase-conjugated to the secondary antibody, followed by DAB staining. This data demonstrates the use of this antibody for immunohistochemistry; clinical relevance has not been evaluated.



PPM1H Antibody (Center)(Cat. #AP9093c) flow cytometry analysis of Jurkat cells (bottom histogram) compared to a negative control cell (top histogram).FITC-conjugated goat-anti-rabbit secondary antibodies were used for the analysis.

PPM1H Antibody (Center) - References

Sugiura,T., et.al., Cancer Biol. Ther. 7 (2), 285-292 (2008)
Labes,M., et.al., Mol. Cell. Neurosci. 12 (1-2), 29-47 (1998)

PPM1H Antibody (Center) - Citations

- [Effect of PPM1H on malignant phenotype of human pancreatic cancer cells.](#)
- [Analysis of Smad Phosphatase Activity In Vitro.](#)